



ELLWOOD

YOUR METALS PARTNER, FROM MELT TO DISTRIBUTION

5083 ATP Cast Tool & Jig Aluminum Plate

CHARACTERISTICS

ELLWOOD Specialty Metals - USA offers its customers cast tool and jig aluminum plates for applications requiring tight dimension control and flatness. The plates are produced from a fine-grain 5083 aluminum alloy which is free from internal stresses and makes the plates highly resistant to corrosion and distortion. Top and bottom surfaces are precision ground and protected with plastic film. Ready for use.

ADVANTAGES

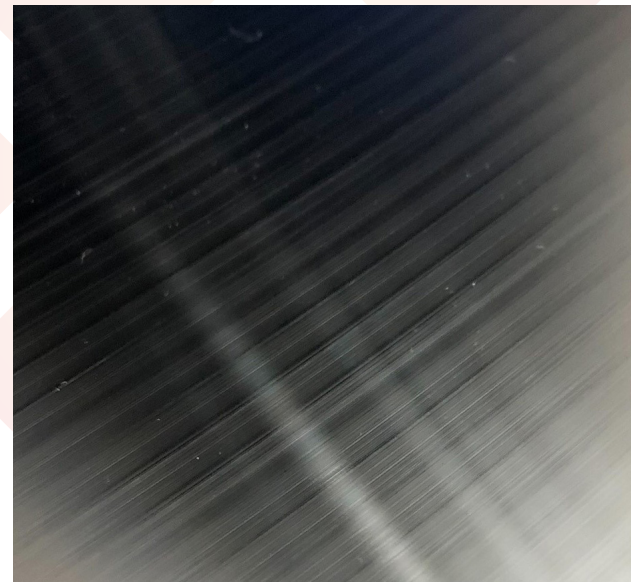
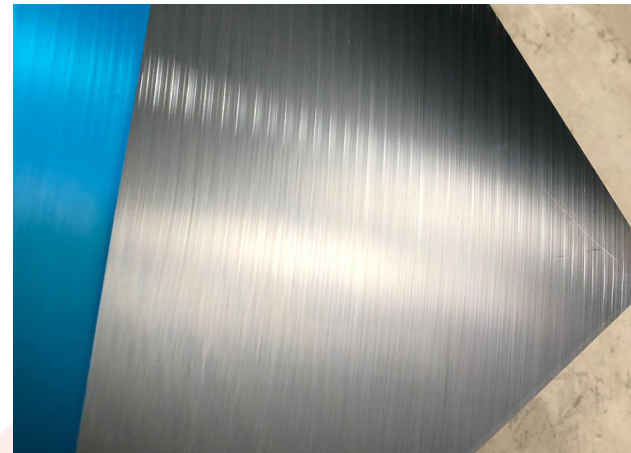
- Internally stable, which prevents movement during machining
- Consistent mechanical properties for entire thickness range
- Lightweight material that reduces the load on ways and screws
- Smooth surface ready for use
- Outstanding performance in high-speed cutting environments
- Acceptable for food contact
- Fully weldable
- Can be anodized

QUALITY ASSURANCE

ELLWOOD Specialty Metals - USA is committed to supplying products and services that meet and exceed quality and performance expectations. We provide customer and technical services that ensure complete satisfaction. Our company establishes product programs to fully support industry or customer requirements.

TYPICAL USES

- Welding Fixtures
- Vacuum Chucks
- Drill Jigs
- Templates & Gages
- Index Tables
- Automotive Tooling
- Aircraft Components
- Mounting Plates
- Foundry Patterns
- Food Machinery Components
- Packing Machinery
- CNC Routing Tables





ELLWOOD

YOUR METALS PARTNER, FROM MELT TO DISTRIBUTION

5083 ATP Cast Tool & Jig Aluminum Plate

5083 ATP PROPERTIES

Hardness	70	Brinell
Thickness	1-5	in.
Max Width	85.5	in.
Max Length	157.5	in.
Ultimate Tensile Strength	23,900	psi
Yield Tensile Strength	15,200	psi
Density	0.101	lb/in ³

Inquire with ESM-USA-Sales@elwd.com for specific sizes.

